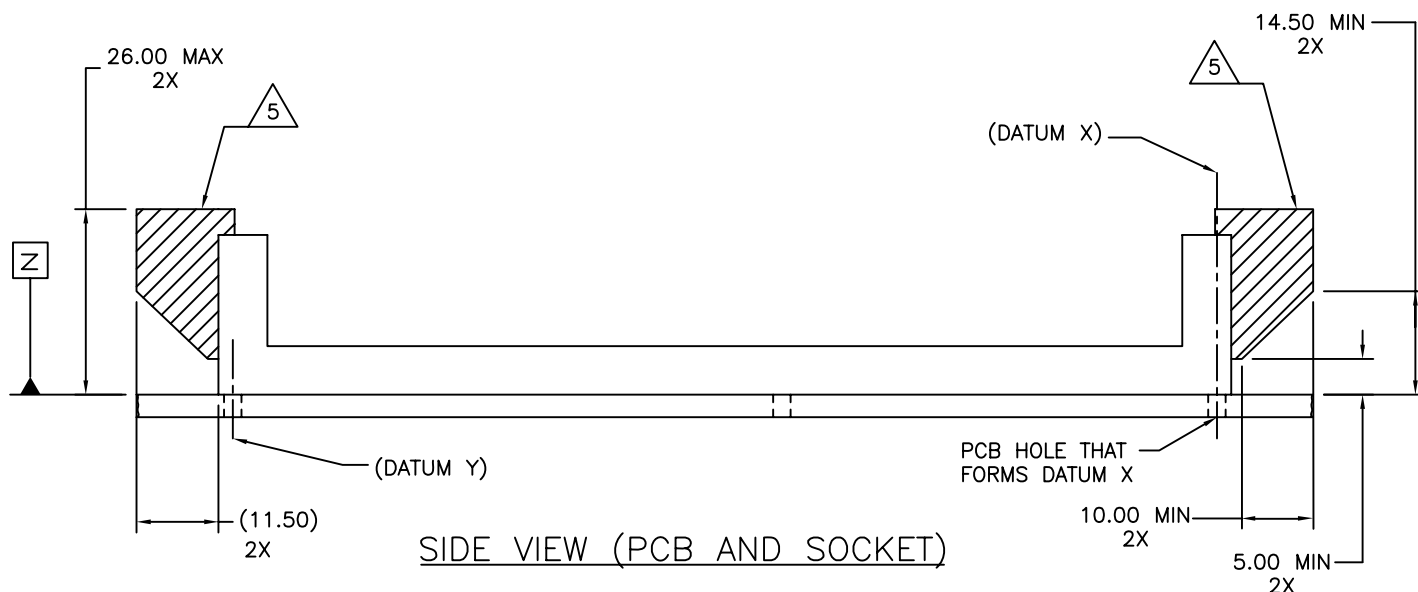
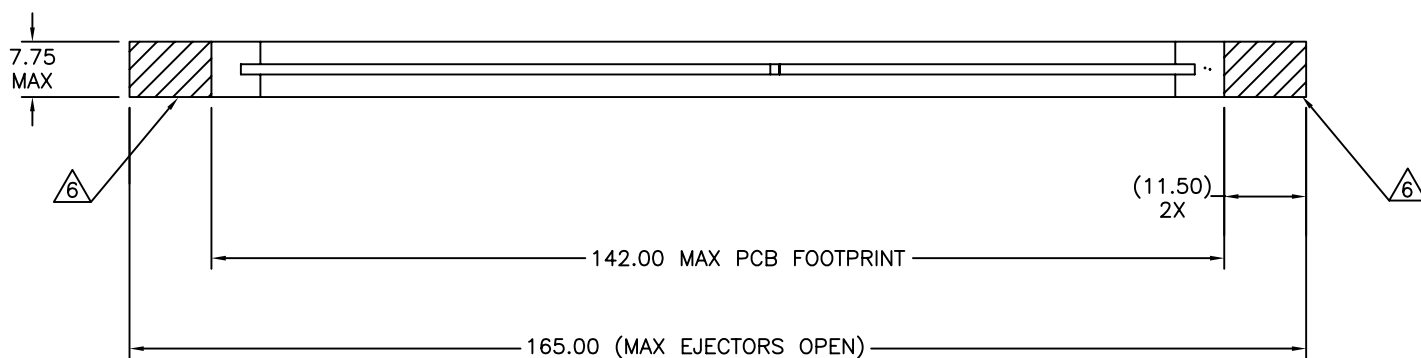


MODULE SEATING PLANE

D 0.50 MAX
0.30 MIN

DETAIL B



SIDE VIEW (PCB AND SOCKET)

NOTES:

1. DIMENSIONS AND TOLERANCING CONFORM TO ASME Y14.5M-1994.

2. ALL DIMENSIONS ARE IN MILLIMETERS (mm).

△₃ DIMENSION IS FROM BOTTOM OF THE SOCKET PCB REFERENCE, DATUM A, TO THE SEATING PLANE OF THE FB DIMM IN THE SOCKET.

△₄ A MINIMUM HEIGHT OF 11.6 mm MEASURED TO THE HIGHEST POINT OF THE SOCKET TO MODULE ENGAGEMENT IS REQUIRED TO PREVENT THE MEMORY MODULE TILTING RELATIVE TO THE DATUM B OF THE SOCKET. A MAXIMUM HEIGHT OF THE TOWER IS LIMITED TO 19.10 mm TO PROVIDE CLEARANCE TO THE OPTIONAL FULL MODULE HEAT SPREADER.

△₅ KEEP OUT CROSS HATCHED AREA RESERVED FOR SOCKET EJECTORS AT BOTH ENDS.

△₆ KEEP OUT ZONE IS HEIGHT LIMITED PER △₅.

7. REFER TO FB DIMM REGISTERED OUTLINE MO-256 FOR MODULE DIMENSIONS. CONNECTORS MUST INCLUDE COMPLEMENTARY FEATURES TO ACCOMMODATE MODULE END NOTCHES.

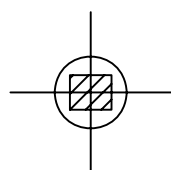
8. THE MAXIMUM INSERTION FORCE FOR THE SOCKET TO BE 106.8 N MAX. THE INSERTION FORCE SHOULD BE MEASURED USING THE JEDEC GAUGE GS-004 REFER TO EIA 364-13 FOR THE TEST PROCEDURE.

△₉ A MINIMUM INSIDE DIMENSION OF 137.50 mm WITH POSITIONAL TOLERANCE IS REQUIRED TO PROVIDE CLEARANCE BETWEEN THE SOCKET TOWER/LATCHES AND THE FULL MODULE HEAT SPREADER.

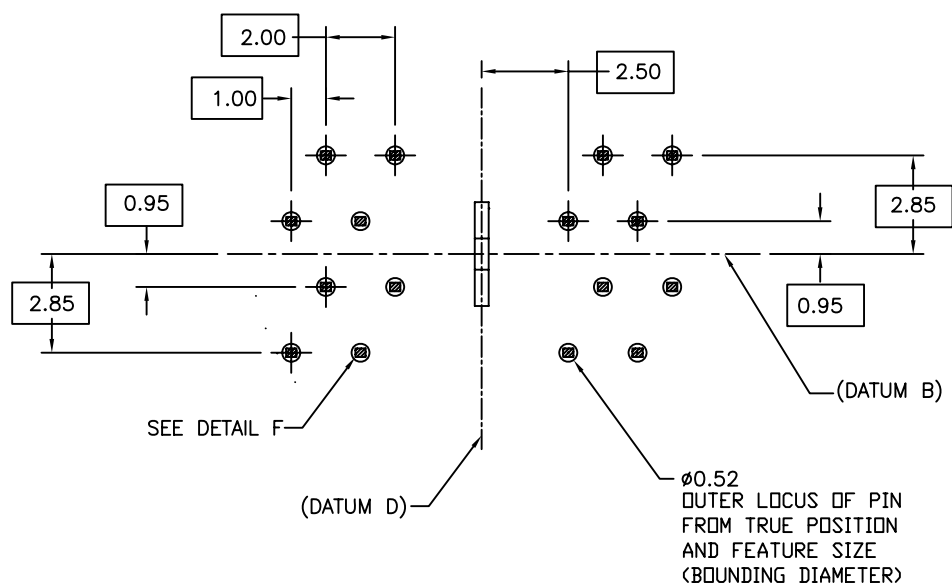
JEDEC SOLID STATE PRODUCT OUTLINE	TITLE: FB DIMM 240 POSITION SOCKET OUTLINE 1.00mm CONTACT CENTERS	ISSUE: B	DATE: 08/06	ITEM NO. SO-003	PAGE: 3 OF 7
---	--	-----------------	--------------------	------------------------	---------------------

NOTES CONTINUED:

- THE CROSS SECTION OF THE SOCKET SOLDER PIN TAILS PLUS THE POSITION AND SIZE TOLERANCE FORM THE OUTER LOCUS BOUNDRY DIAMETER.



DETAIL F



OUTER LOCUS OF CONNECTOR SOLDER PIN TAILS

FIGURE D

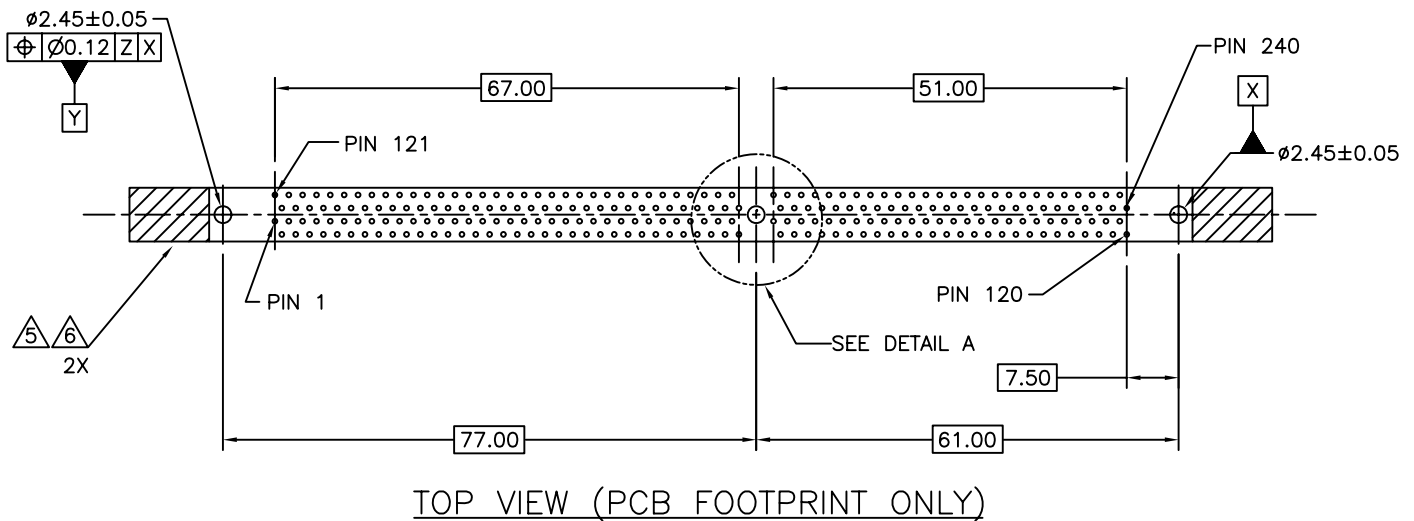
APPLICATION NOTES:

11. IN ORDER TO PREVENT BINDING, DAMAGE OR POSSIBLE SHORTING BETWEEN CONTACTS, A VERTICAL ALIGNMENT AND INSERTION OF THE MEMORY MODULE INTO THE SOCKET IS RECOMMENDED.

- △12 WHEN THE SOCKET IS INSERTED INTO THE PCB, THE BOARD LOCKS ARE INTENDED TO PROVIDE A SNUG FIT TO MAINTAIN THE SOCKET FLUSH TO THE PCB AND TO ALLOW NO SIDE MOVEMENT.

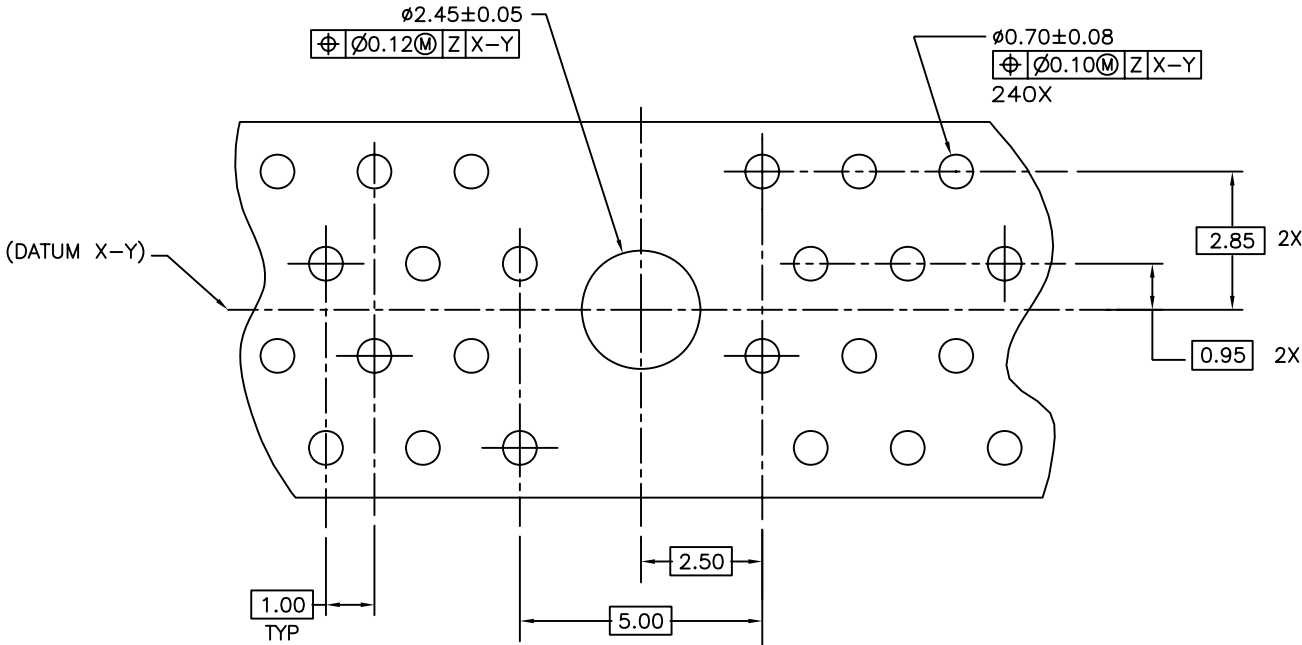
- ### 13. REFERENCE PCB FOOTPRINT (FOR THROUGH HOLE PINS ONLY)

- 14 RECOMMENDED DIMENSIONS OF THESE FEATURES WERE DERIVED TO ALLOW
A ROUTING SOLUTION ON THE MOTHERBOARD.

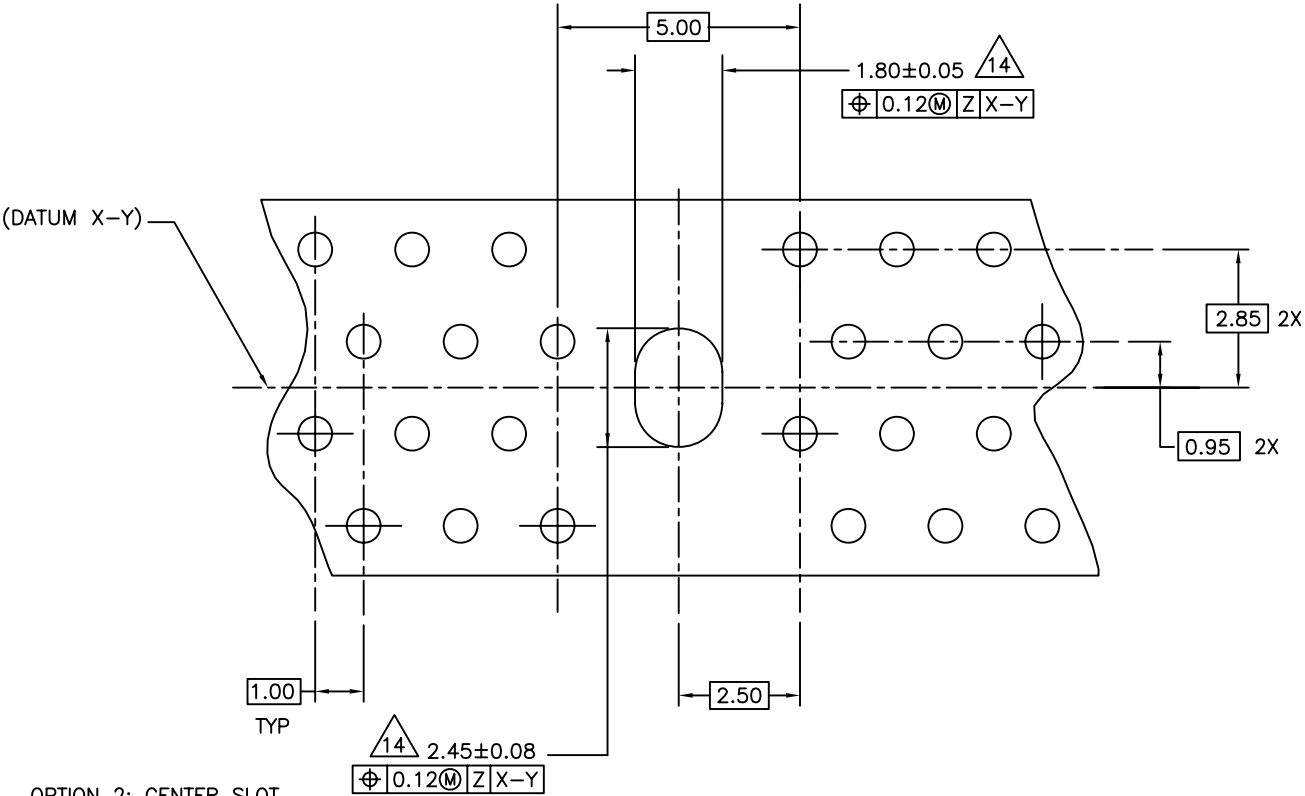


JEDEC SOLID STATE PRODUCT OUTLINE	TITLE: FB DIMM 240 POSITION SOCKET OUTLINE 1.00mm CONTACT CENTERS	ISSUE: B	DATE: 08/06	ITEM NO. SO-003	PAGE: 5 OF 7
---	--	-----------------	--------------------	------------------------	---------------------

APPLICATION NOTES CONTINUED:



OPTION 1: CENTER ROUND HOLE



OPTION 2: CENTER SLOT

DETAIL A

JEDEC SOLID STATE PRODUCT OUTLINE	TITLE: FB DIMM 240 POSITION SOCKET OUTLINE 1.00mm CONTACT CENTERS	ISSUE: B	DATE: 08/06	ITEM NO. SO-003	PAGE: 6 OF 7
---	--	-----------------	--------------------	------------------------	---------------------

Change Record

If the changes involves any words added or deleted (excluding deletion of accidentally repeated words),
the change is included. Punctuation chages may or may not be included.

Initial Issue: A	Date: August 2004	Item:
------------------	-------------------	-------

Revision History:

Issue: B	Date: JULY 06	Item: 11.14-082 & 11.14-087
----------	---------------	-----------------------------

Location	Change from:	Change to:
Page 1	New Dimension	133.75
Page 1	New Dimension	1.45 (+0.05/−0.08)
Page 1	New Basic Dimension	8.00
Page 1	New Geometric Datum Plane	B
Page 1	New Geometric Datum Plane	A
Page 1	New Dimension	128.6 MIN
Page 1	New Dimension	.30 MIN AND .50 MAX
Page 1	New Dimension	2.50 MIN 2X
Page 1	NEW DIMENSION	19.10 MAX
Page 1	NEW DIMENSION	137.5 MIN
Page 2	New View	Detail B
Page 2	New Dimension	1.30
Page 2	New Dimension	3.55 MAX
Page 2	New Dimension	0.30
Page 2	New Datum	D
Page 2	11.50 +/- 0.10	(11.50) 2X
Page 3	New Notes	Notes: 4, 8 and 9
Page 3, NOTE 3	DATUM Z REFERENCE	DATUM A REFERENCE
Page 4	New Application Notes	Notes: 10,11 and 12
Page 4	New View	Pattern Of Terminal Position
Page 4, NOTE 8	EIA 364−13D TEST METHOD B	EIA 364−13
Page 6	NOTE 14 CALLOUT	REMOVED CALLOUT IN OPTION 1

JEDEC SOLID STATE PRODUCT OUTLINE	TITLE: FB DIMM 240 POSITION SOCKET OUTLINE 1.00mm CONTACT CENTERS	ISSUE: B	DATE: 08/06	ITEM NO. SO−003	PAGE: 7 OF 7
---	--	-----------------	--------------------	------------------------	---------------------